



Product Introduction

Presenter: Product Marketing
Steven Chang



SD



Push-Push Type
Top Mount



Push-Push Type
w/Card Lock



Top Mount



Push-Push Type
Reverse Mount



Push-Push Type
w/Card Lock

Micro SD



Push-Push Type



Push-Push Type



Hinge Type



Push-Pull Type

SD/microSD 4.0



Product Advantage

(112C) micro SD card socket, Hinge type



ATTEND
Connect to Your Success

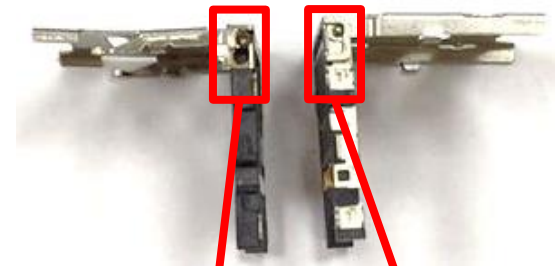
Optimization :

- Shaft Intensity and Bearing Intensity
- minimum 1,000 times durability
- Made of metal

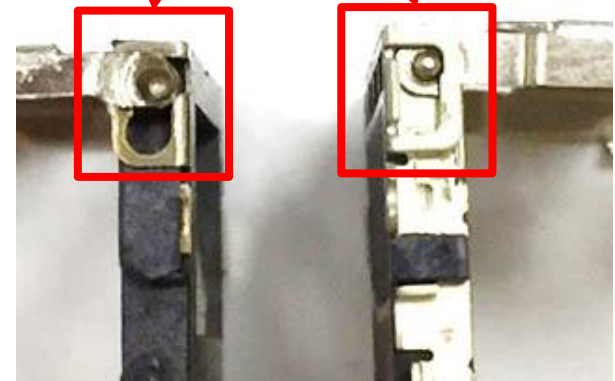
Drawing:



Other supplier



 **ATTEND**
Connect to Your Success



Product Advantage

(112C) micro SD card socket, Hinge type

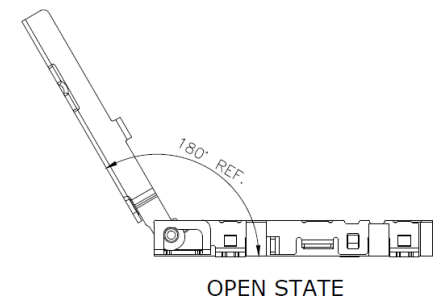
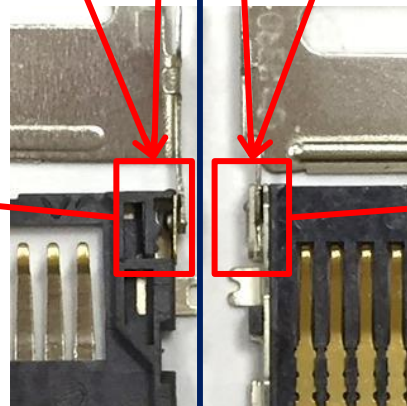
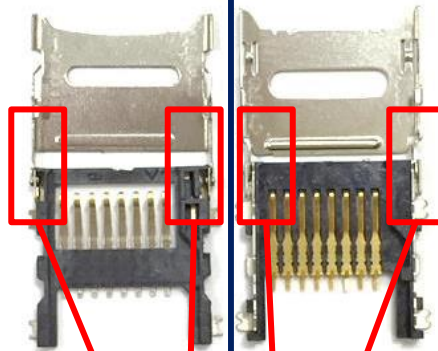


Other supplier

- Outside-in hook
- Easy come off



- Stronger mechanical design
- Inside-out hook
- Anti-loosen shaft not easy come off
- Wear-resistant metal shaft and bearing
- Smooth hinging without angle declination limit



Push-Push Type

Plastic Hinge Type

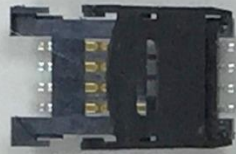
w/Card Holder

w/o Card Holder

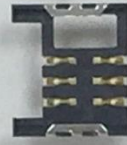
Slim Type



6+2 Pin Switch



6 Pin & 2 switch Pin



6 Pin



H: 1.6 mm



Micro SIM



8+2 Pin Switch



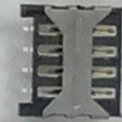
8 Pin



8 Pin



H: 2.6 mm



Dual SIM

Metal Hinge Type

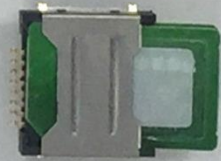


6 Pin

Nano SIM



Eject Type



Product Advantage

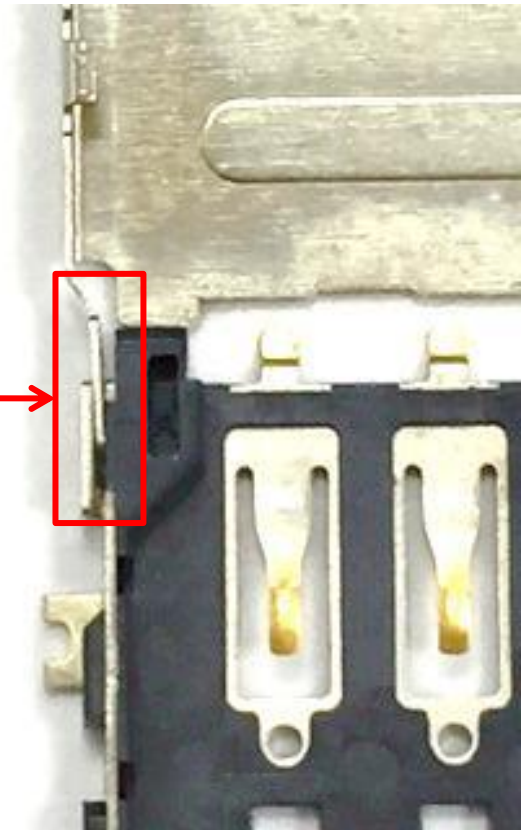
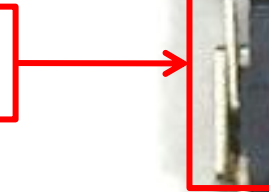
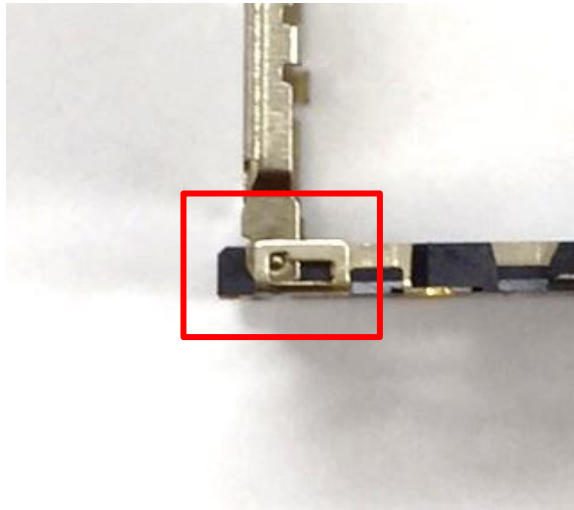
(115R) micro SIM card socket, Hinge type



ATTEND
Connect to Your Success

- Stronger mechanical design
- Inside-out hook
- Smooth hinging without angle declination limit
- Anti-loosen shaft not easy come off
- Wear-resistant metal shaft and bearing

Drawing



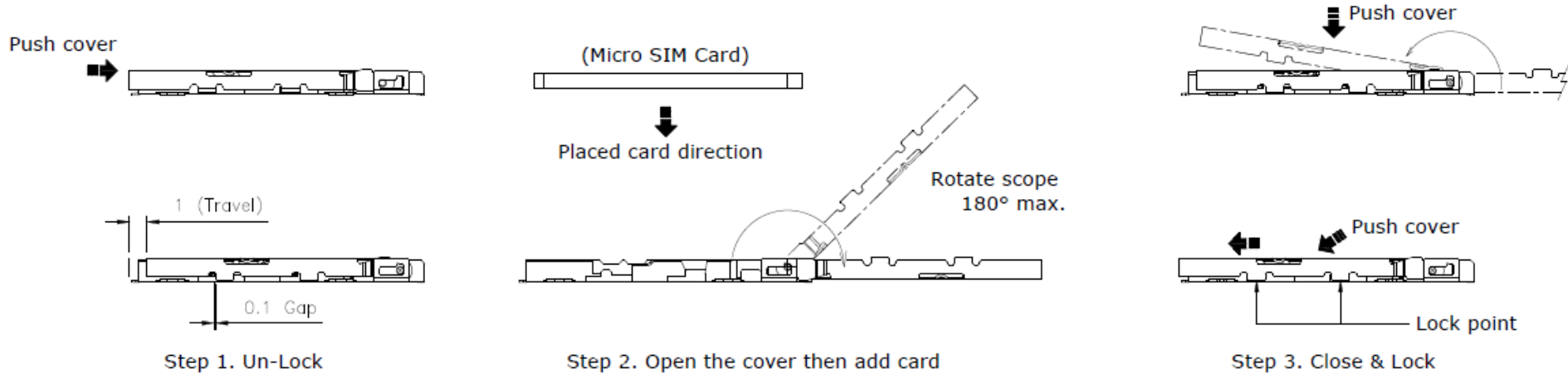
Product Advantage

(115R) micro SIM card socket, Hinge type



ATTEND
Connect to Your Success

Operating Figure:





- THANK YOU -